

Edinburgh Napier
UNIVERSITY



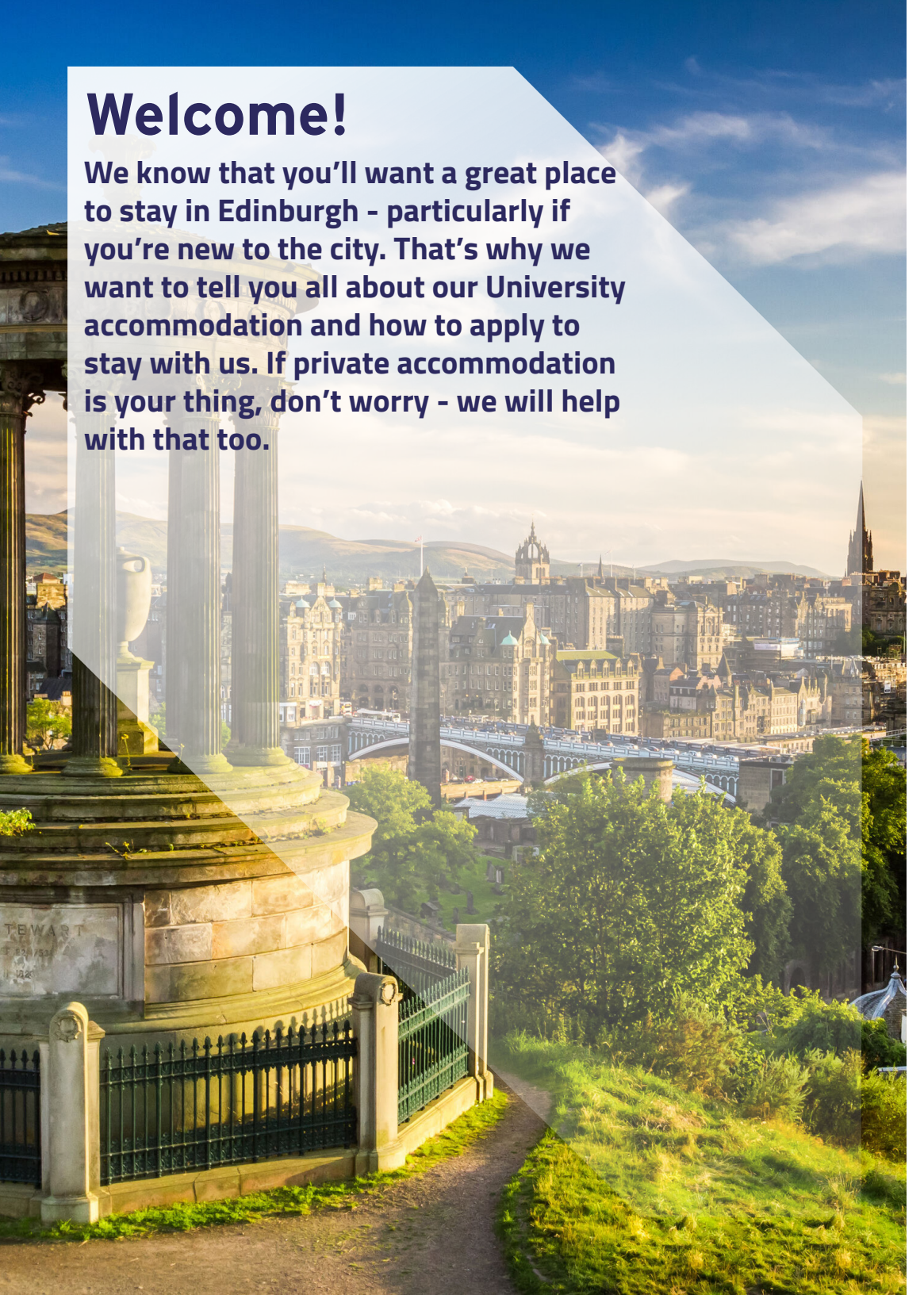
Student
Accommodation

STUDENT ACCOMMODATION 2024-25



Welcome!

We know that you'll want a great place to stay in Edinburgh - particularly if you're new to the city. That's why we want to tell you all about our University accommodation and how to apply to stay with us. If private accommodation is your thing, don't worry - we will help with that too.



CAN I APPLY FOR UNIVERSITY ACCOMMODATION?

Check our [guarantee guidelines below](#).

Unconditional offer

Undergraduate students – first-year and direct entrant students. If you:

- Have firmly accepted an unconditional firm offer of study from Edinburgh Napier University, and;
- Live outwith the EH postcode*, and;
- Have obtained entry clearance (if you're an overseas student), and;
- Will be unaccompanied (i.e. not bringing any dependants, such as a partner and/or children), and;
- Are a full time student, studying for the full academic year

*EH postcode applicants can apply to join the waiting list with an unconditional offer.

Conditional offer

If you hold a conditional offer, you will need to wait for it to become unconditional before you can apply for accommodation. Our guarantee date takes into account most exam result dates so no need to worry.

Postgraduate students

We have spaces available in specifically designated Postgraduate flats which are generally in smaller developments.* The majority of these flats are mixed gender. Spaces are offered on a first-come first-served basis, so apply early to avoid disappointment.

*On rare occasions, we may be required to house postgraduates and undergraduates together; however, prior notice will be given.

Disabilities and Care Experience

We have some spaces available for students with a disability or care leavers. Please contact accommodation@napier.ac.uk to discuss your requirements. (Please contact us as early as possible. Even if you do not meet all the eligibility requirements yet, we can hold a space provisionally for you depending on your circumstances.)

1 trimester students

We have a limited number of spaces for students staying for one trimester only, offered on a first-come first-served basis. We can't guarantee you will receive an offer of accommodation, so when these spaces become full we can assist you in finding accommodation in the private sector.

If you are not eligible to apply, or have missed our guarantee date, you can ask to be put on our waiting list – just email accommodation@napier.ac.uk. We will also help you with information and advice on finding accommodation in the private sector.

Check the website for more information: napier.ac.uk/accommodation.

We will guarantee undergraduates who meet the criteria an offer of accommodation if we receive your online application and pre-payment by our guarantee date of Friday 23 August 2024 at 3pm. Republic of Ireland and GCSE students please contact office to pre reserve

HOW AND WHEN CAN I APPLY?

You can apply now for the September 2024 session. You must hold an unconditional firm offer from Edinburgh Napier University.

Apply online at napier.ac.uk/study-with-us/accommodation

Check if you are eligible to apply at napier.ac.uk/study-with-us/accommodation/who-can-apply.

You will need your Edinburgh Napier number to give you access to our online application system. This will be displayed in any correspondence you receive from Student Recruitment and Admissions.

You must also have your own email address to apply. You will be asked to pay a £500 advance rent payment during the application process.

We only accept a debit/credit card payment for the advance rent payment. **Please note this is not a deposit and this amount is deducted from the overall cost of your rent.**

Once we have accepted your application, you will be sent a tenancy



agreement and an offer letter with details of where you will be staying, when and where you can collect your key, details of the online induction, rent payment information and guarantor form. You will submit your guarantor form and the £500 advance rent payment when accepting your offer. **Make sure you read through your tenancy agreement before you sign as it is a legally-binding document.**

If you apply and make your advance rent payment by our guarantee date and you are a full-time first year or direct entrant undergraduate, we will guarantee you an offer of accommodation. This should be in one of the accommodations listed opposite, however in times of high demand, we may offer you accommodation in carefully-selected third-party provided accommodation.



WHAT ACCOMMODATION IS AVAILABLE?

Edinburgh Napier University has 1,240 beds in self-catered flats. We have a small number of studio flats, twin rooms and a mixture of premium and en suite accommodation in flats of 1 - 9 people.

We offer single and mixed-gender flats. All students have their own single study en suite bedroom (unless in a twin room or premium flat) along with a shared kitchen/living area.

All our flats are strictly non-smoking including e-cigarettes and vaping.

All our flats are within 15-20 minute walk to the city centre, not campus-based. They are close to local shops, supermarkets, cinema and amenities, located on good bus routes to the campuses and within walking distance of each other. Edinburgh Napier University has a third-party agreement for around 60 beds available to students with another accommodation provider.

Flat developments

Slateford Road, EH11 1FE

- Studio from £209.23 per week.
- En suite room in cluster from £189.98 per week.
- Premium two-bedroom flats at £203.91 per week.

Orwell Terrace, EH11 2DY

- Twin room from £123.69 per week.
- En suite room in cluster from £189.98 per week

Bainfield, 6 Bainfield Drive, EH11 1AR

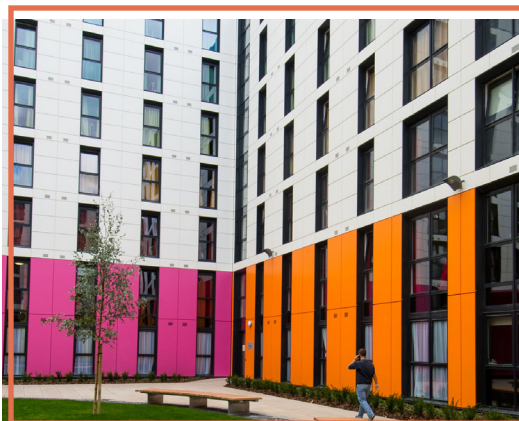
- Studio flat from £209.23 per week.
- En suite shared flat from £189.98 per week

Capitol Students (Westfield)

- Rooms from £189.98 per week

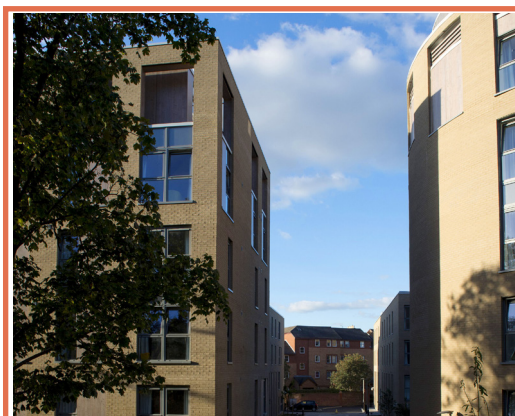
WHERE IS THE ACCOMMODATION?

Visit our website at napier.ac.uk/accommodation for the accommodation addresses, including a link to Google street view so you can check them out without even being in Edinburgh!



Bainfield (EH11 1AR)

Merchiston	1 mile
Craiglockhart	2 miles
Sighthill	4.5 miles



Orwell Terrace (EH11 2DY)

Merchiston	1.5 mile
Craiglockhart	3 miles
Sighthill	5 miles



Slateford Road (EH11 1FE)

Merchiston	1 mile
Craiglockhart	1.5 miles
Sighthill	3.5 miles



Westfield (EH11 2QB)

Merchiston	1.5 mile
Craiglockhart	1.8 miles
Sighthill	2 miles

YOUR QUESTIONS ANSWERED



Am I guaranteed accommodation?

You are guaranteed an offer of accommodation provided you meet all our criteria (see page 1) and apply and make payment before the guarantee date of 23 August at 3pm. Some of our accommodation offered is via a nominations agreement with a third-party provider and in times of high demand, we may source additional third-party accommodation to offer you which may be at a higher rent than our own. If you decline your offer, we will not be able to make you another offer of accommodation.

When will I hear if I have been allocated accommodation?

If you have completed the online application correctly, we aim to process your application within four working days of receipt. We will confirm everything to you by email, so please check regularly. If you do not receive the information after four working days, email accommodation@napier.ac.uk

What if I have a disability or additional needs?

The University has adapted accommodation and where possible can install certain adaptations for students with a disability or additional needs. Please contact the

Accommodation Office on **0131 455 3713** in the first instance to discuss, even if you do not meet all the eligibility requirements yet, as we can provisionally pre-reserve a place for students who have mobility issues, require hearing aid equipment or those with ASD.

Will I have my own bedroom?

Yes. All the bedrooms, apart from twin rooms, are single study bedrooms fully fitted with all the necessary furniture. You will have a lock on your bedroom door. All bedrooms at Bainfield, Slateford Road and Orwell Terrace have en suite shower room/toilet, except premium rooms at Slateford Road that share a bathroom.

What equipment/furniture is supplied in the flats?

The flats are fully furnished. The kitchen includes a cooker, fridge/freezer, microwave, kettle, toaster, iron, ironing board and vacuum cleaner. At Bainfield, Slateford Road and Orwell Terrace we have central laundry rooms. These are provided by washco (www.washpoint.uk). All communal lounges include a wall mounted smart TV. Please note, a TV license is not included.

Utilities are covered by the university, and heating is activated during scheduled times throughout the day.

What do I have to provide?

Your bedroom includes the following items: a bed, desk chair, wardrobe, bed lamp and waste bin. You will need to supply your own bed linen, kitchen crockery, cutlery, pots, pans, utensils, towels and your own food. You can purchase a bedding pack from unikit when you apply for accommodation. At all our sites, the beds are 4ft small doubles.

Is there internet in the flat?

Yes, a high-speed internet provision is included in your rent and all hardware will be provided for you. A wired connection and Wi-Fi access are both provided. Internet is provided by a third-party provider. Full details will be in your room on arrival.

Is there a phone in the flat?

No, there is no telephone device in the flats. However, there is an intercom in the flat for secure access into the building and flat.

Can I share with friends?

No, although we can place you at the same development. The exception to this is our twin rooms at Orwell Terrace, where you can apply to stay with a friend.

Who will I share with?

The information on your application will be used to give a balanced mix to the flats - different courses of study, same age range and gender (unless otherwise stated). If you are not happy in your flat, requests for transfers will be considered in October if spaces become available.

Can I smoke in my flat?

No. Smoking is not permitted anywhere in Edinburgh Napier accommodation. This includes e-cigarettes and vapes.

How long can I stay in my flat?

All tenancies run from early September 2024. Undergraduate students shall receive a 39-week tenancy based upon allocation. Nursing students are given 50-week leases until late August 2025. Postgraduate students are given the option of either a

39-week or 50-week tenancies. The exact tenancy end date will be given on the tenancy agreement you sign.

Can I stay in the university flat briefly then move out to the private sector?

No, you cannot sign a University tenancy and then leave after a couple of weeks. Short-term tenancies are not possible and you will remain liable for rent payments until the tenancy end date, or until an alternative replacement student is secured.

Is there bicycle storage?

Yes. We offer secure bicycle storage at all developments.

What about car parking?

We do not have parking facilities at any of our sites, with the exception of limited blue badge disabled bays at Bainfield, Slateford Road and Orwell Terrace. Please note that these spaces are controlled by the City of Edinburgh Council and not the Student Accommodation.

Can I view the accommodation?

We cannot offer individual site visits unless you have a disability. However, we offer site and flat tours of Bainfield and Slateford Road during our three main Applicant Days in April, September and October each year.

In addition, we also offer future students and parents the opportunity to attend a site tour where we aim to show a sample flat. For further information please see our website <https://www.napier.ac.uk/study-with-us/accommodation/applying-faqs>

NOT ELIGIBLE FOR UNIVERSITY ACCOMMODATION?

Want to stay in your own flat in the private sector?

Information and advice is available at napier.ac.uk/study-with-us/accommodation/private-accommodation

Please note that we do not inspect flats within the private accommodation sector and are unable to guarantee suitability. We would advise you to visit Edinburgh before the start of the session to secure accommodation. Book into a short-term hostel while you look for accommodation for the rest of the session.

Devote sufficient time to looking for accommodation. Private sector accommodation is plentiful but there are lots of students from the four universities within the city looking at the same time.

Always view properties before making any commitment and before handing over any money.

Make sure that you get receipts for all money and deposits you hand over and that everything you agree to is in writing.

Always check what is included in the property.

Check that the property has the appropriate certificates, for example current gas safety certificate if applicable, and an HMO licence if there are three or more people in the flat.

Remember that you will be asked to sign a tenancy agreement which is a legally-binding document.

We run a free private accommodation support service in September and January, aimed at helping students look for private accommodation. We also host a housing fair in February that has lots of information. Keep an eye on our website for more information about these sessions.





STUDENT ACCOMMODATION RESIDENCE LIFE

At Edinburgh Napier University, we are committed to improving the student experience through the provision of a social calendar as well as access to support services, within and outwith the University itself.

While living with us at Edinburgh Napier, you will become part of a University community that encourages and supports our students in every aspect of their personal development. This is done through peer signposting and support as well as access to a dedicated team of full-time student welfare and advice professionals. The Student Accommodation team will also continue to support students even after they have moved out of our accommodation and are on hand to provide guidance and support throughout any student's University career.

Student Accommodation's Residence

Life programme is here to ensure that all Edinburgh Napier students benefit from the University experience and have all the available resources on hand to help them succeed personally, socially and academically.

Find out more at napier.ac.uk/reslife or keep up to date with all our latest events by following [@ENUReslife](https://www.facebook.com/ENUReslife) on Facebook and [@enu_accommodation](https://www.instagram.com/enu_accommodation) on Instagram.

Out of hours cover is provided at each site by our fully trained, living in house Resident Assistants, who can handle emergencies including health issues, fire, security and general advice.

The Edinburgh Napier security team are available 24 hours a day and their contact details will be on the notice board in your flat. Students can also access SafeZone, a free app designed to keep you safe on campus by connecting you directly to our Edinburgh Napier 24-hour security team.

CONTACT

Edinburgh Napier University
Student Accommodation
Property & Facilities
6 Bainfield Drive
Edinburgh EH11 1AR

Tel: 01314553713

Email: accommodation@napier.ac.uk

Apply online at
napier.ac.uk/accommodation



All information contained in the booklet is correct at time of printing but subject to change. Please check the website for the most up to date information. napier.ac.uk/study-with-us/accommodation
Edinburgh Napier University is a registered Scottish charity. Registration Number SC018373